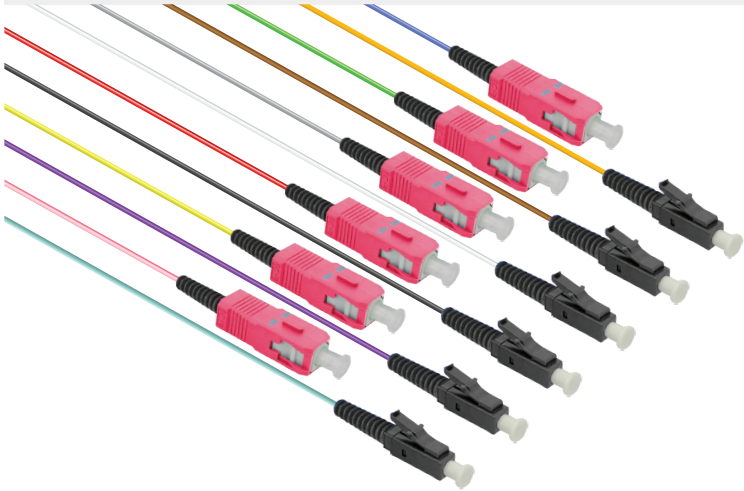
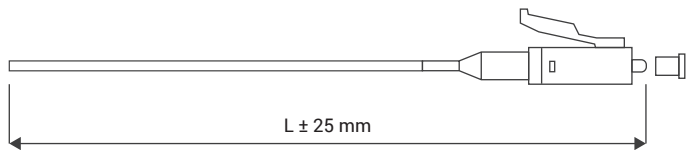


Multi Mode Pigtails



Properties

LC Connector Compliance	IEC 61754-20, TIA 604-10-A, RoHS
SC Connector Compliance	IEC 61754-4, TIA 604-3, RoHS
FC Connector Compliance	IEC 61754-13, TIA 604-4-A, RoHS
ST Connector Compliance	IEC 61754-2, TIA 604-2, RoHS
E2000 Connector Compliance	IEC 61754 - 15, TIA 604 - 16, RoHS
Alignment Technology	Full ceramic ferrule (Zirconia ZrO2)
Operating Temperature	-40°C to +85°C
Flammability	UL94 V-0
Durability	> 1000 mating cycles
Transmission with Applied Tensile Load	GR-326 CORE 4.4.3.5
Insertion Loss: IEC 61300-3-4-MB	Multimode: ≤ 0.40dB
Return Loss: IEC 61300-3-6-MB	Multimode: ≥ 40dB
Connector End Face Geometry	IEC 61755-3



I - PT - 01 - SB - 009 - M4 - BU - LC - 005M

Type	Type	Fiber Count	Cable Type	Diameter	Fiber Type	Color	1. Connector	Length
Indoor: I	Pigtail: PT	1 Fiber: 01	Semi-Tight: SB Tight: TB	0.9mm: 009	MM G.651 OM1: M1 MM G.651 OM2: M2 MM G.651 OM3: M3 MM G.651 OM4: M4	Blue: BU Orange: OR Green: GN Brown: BN Grey: GY White: WT Red: RD Black: BK Yellow: YL Violet: VT Pink: PK Aqua: AQ	SC-UPC: SC LC-UPC: LC FC-UPC: FC ST-UPC: ST E2000-UPC: E2	...M